

M12 Distribution Boxes

Thermoplastic Housings for Industrial Use



Configuration

Ports: 4, 6, or 8 M12 receptacles
Signals per Port: 1 or 2
Control Cable: Black PVC
Control Connector: M23

Materials

Housing: Thermoplastic polyurethane, flame retardant
Insert: Glass-filled polyamide, flame retardant
Contacts: Copper zinc, plated gold over nickel
Receptacle Shell: Copper zinc, nickel plated
O-Ring: FKM fluoroelastomer

Environmental

Sealing: IP67/NEMA 6P
Temperature Range: -15°C to +80°C

Electrical

Contact Resistance: 5 mΩ max.
Voltage Rating:
 Without LEDs: 30 VDC
 With LED: 10 to 30 VDC
Current Rating: 4 A Per Port / 12 A total

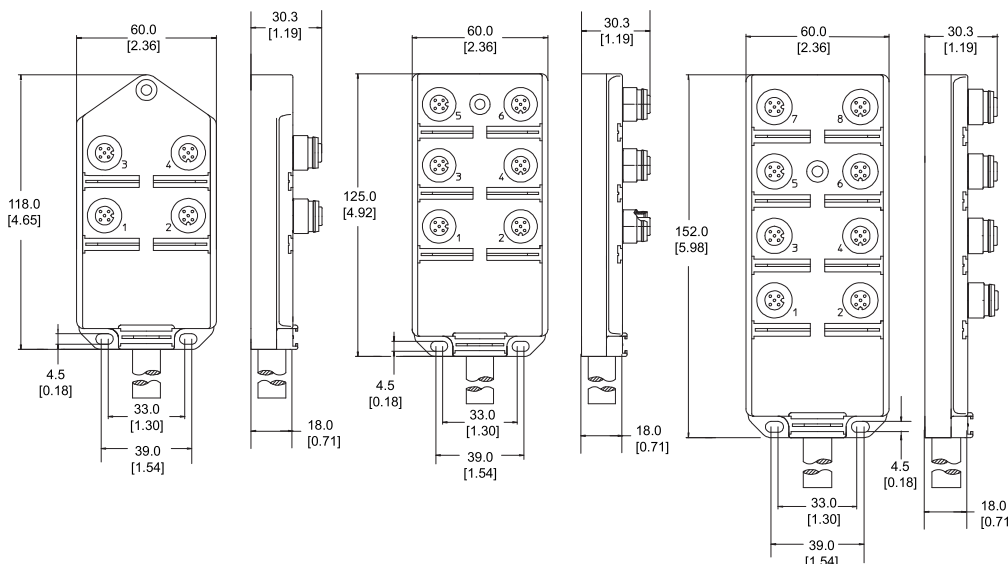
Accessories (Included)

Dust Covers
 Attachable Labels



| Ports | Signals/Ports | LEDs | Part Number | | |
|-------|---------------|------|---------------|-----------|------------|
| | | | Connectorized | 5 m Cable | 10 m Cable |
| 4 | 1 | Yes | 916-CN | 916-5M | 916-10M |
| | | No | — | 917-5M | 917-10M |
| | 2 | Yes | 918-CN | 918-5M | 918-10M |
| | | No | 919-CN | 919-5M | 919-10M |
| 6 | 1 | Yes | 912-CN | 912-5M | 912-10M |
| | | No | 913-CN | 913-5M | 913-10M |
| | 2 | Yes | 914-CN | 914-5M | 914-10M |
| | | No | 915-CN | 915-5M | 915-10M |
| 8 | 1 | Yes | 908-CN | 908-5M | 908-10M |
| | | No | 909-CN | 909-5M | 909-10M |
| | 2 | Yes | 910-CN | 910-5M | 910-10M |
| | | No | 911-CN | 911-5M | 911-10M |

Note: LEDs are wired for use with pNp sensors.



4 Ports
 916, 917, 918, 919 Series

6 Ports
 912, 913, 914, 915 Series

8 Ports
 908, 909, 910, 911 Series



AUTHORISED REPRESENTATIVE:
MEDs Interconnect Pte Ltd
 5012 Ang Mo Kio 5, #03-09 Techplace II
 (East Wing), Singapore 569876
 Email: sales.marketing@meds-int.com
 Tel: +65 6235 6355