





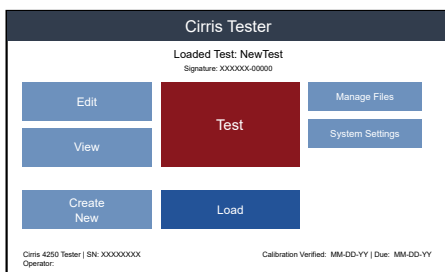


## Create New Test Program

Before a cable can be tested, a test program must be created. This is most often accomplished by using the tester's capability to "learn" a sample product. Once a test program has been created, it can be saved and then loaded when needed to test subsequent batches of the same product.

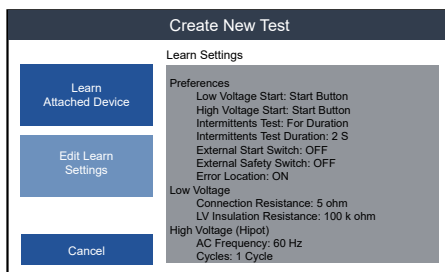
To create a test program using the Learn feature:

1. Install the appropriate adapters.
2. From the tester's **Main Menu**, press **Create New**.

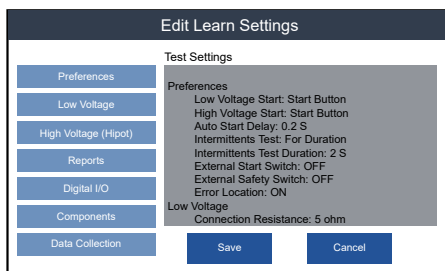


3. Press **Edit Learn Settings** to adjust settings per the cable specifications.

**Note:** Edited learn settings will be saved as the default for subsequent learns until they're edited again.



4. Using the category options on the left side of the screen, adjust the learn settings to match your cable's specifications.



## Learn Settings

### Preferences:

- Set the low voltage start condition (and high voltage start condition if using a 4250 tester). Set the desired Intermittents Test parameters and decide whether to prompt the operator to enter a Lot ID.

### Low Voltage:

- Set the maximum acceptable connection resistance and the minimum insulation resistance (isolation resistance).

### High Voltage (Hipot) on 4250 only:

- Set hipot voltage, minimum insulation resistance, and dwell time. If needed, **Advanced Settings** can be accessed to adjust dielectric withstand test parameters separately.

### Reports:

- Select reports/labels and configure print settings. Reports/labels are not added to a test program by default.

### Digital I/O:

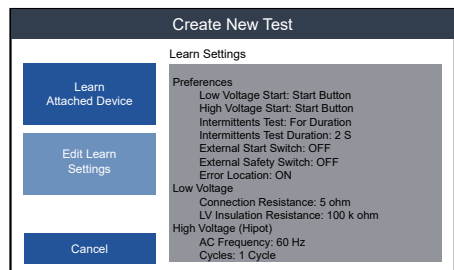
- The testing process can be automated by including Digital I/O in the test program. See the *4200 User Manual* for information on the topic.

### Components:

- Designate which components, if any, are included in the DUT. Options include resistors, capacitors, diodes and twisted pairs. Adding a 4-Wire component will trigger the tester to identify 4-Wire pairs in the test fixture before learning the DUT.

## Perform a Learn

1. After making any required changes to the Learn Settings, select **Save** to return to the **Create New Test** screen. Attach the sample DUT and press **Learn Attached Device**. The tester will scan the DUT and create a test program.
2. After the learn is complete, the tester will display the test program on the **Verify and Save Learned Test Program** screen. Review the program and verify that the settings are correct and that the connections and any components match the documentation for the DUT.



## Saving Test Programs

After verifying that the test program is accurate, save the program using one of the two options:

### Save

---

By pressing **Save**, the tester will name the test program “NewTest.wir” and will store it in a default location. The next time a Learn is performed, selecting **Save** will overwrite the test program saved in the default location.

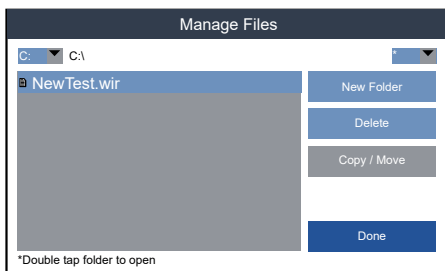
### Save As...

---

By pressing **Save As**, you will be able to select a storage location and name for the test program.

1. Navigate to a location within the directory to save the test program. If you are using Cirris Hub Software, saving files to the network location (F:) will allow other networked testers to use the test program also.

**Note:** *The selected location will be the default the next time you load or save a test program.*



2. To name the new test program, select **New...**, type in a name for the program and press **Done**.

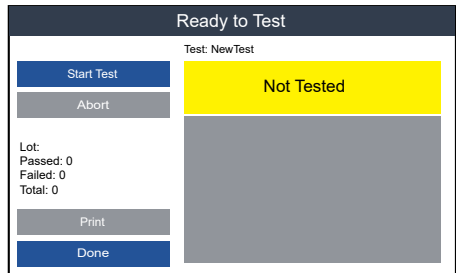
## Load a Test Program

From the **Main Menu**, press **Load**. Navigate to the appropriate directory by selecting a drive from the top left drop-down box. Open a folder by tapping on it twice. To go back, double-tap the folder with the trailing two dots (.).

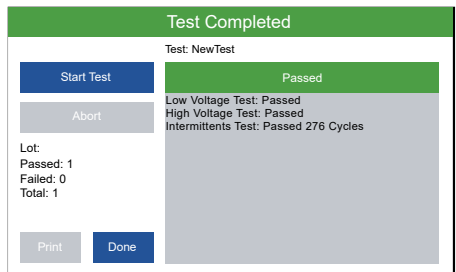
When the desired test program has been located, select it and press **Load**. The name of the loaded test program will appear at the top of the **Main Menu**.

## Test

1. From the **Main Menu**, check that the correct test program is loaded and press **Test**.
2. Depending on your Start Condition, either attach a cable to start the test automatically, or attach a cable and press **Start Test**.
3. The low voltage testing is initiated and may take less than a second to complete.
4. (For 4250 testers only) If the low voltage portion of the test passes, the high voltage (hipot) test window will open and the test will begin depending on the start condition. If the low voltage portion of the test fails, the test will terminate.



5. If an intermittents test was programmed, it will begin after the test passes on a 4200 tester and after the high voltage test passes on a 4250 (if a hipot test was programmed). Flex the cable to check for intermittent errors. The test will end depending on the intermittents test settings.
6. If the test passed, the header will turn green and display "Passed." If the test failed, the header will turn red and display "Failed" and the error details will appear in the test window.



## Common Errors

**Open Errors:** A gap in the intended electrical path.

**Short:** Unintended contact between two or more points.

**Miswire:** The wire is terminated to an incorrect contact.

For more information on errors, refer to the *4200 Series User Manual* or [cirris.com](http://cirris.com).

## Finishing a Test

When the test is complete, disconnect the DUT from the tester. The test screen will reset and be ready for the operator to connect another cable, or press **Done** to return to the **Main Menu**.

If a report was added to the test, it will either print automatically when the DUT is disconnected or the operator can press **Print**.

## Safety Warning



The 4250 tester is capable of performing high voltage Dielectric Withstand (DW) and Insulation Resistance (IR) testing. By design and function, the output of high voltage (hipot) testers presents a risk of electric shock. 4250 testers limit current, high voltage energy and high voltage charge to mitigate this risk. However, an individual wearing a cardiac pacemaker, an insulin pump, or any electronically controlled medical device should NOT perform high voltage testing. It's also prudent and necessary to protect workers from exposure to high voltage. Please see the *4200 Series User Manual* for the complete high voltage warning and recommended safety measures before using the equipment.

## Help / Support

For assistance with your Cirris test system:

- Visit [www.cirris.com/learning-center](http://www.cirris.com/learning-center) to read articles on Cirris products and other testing subjects.
- In the USA, contact our technical support team: 800-441-9910, ext. 666 (or ask for Tech Support).
- Outside the USA, call 801-973-4600 or visit [www.cirris.com](http://www.cirris.com) to find the Cirris office nearest to you.

Version 2020.3.0



**EXCLUSIVE DISTRIBUTOR (SEA):**  
**MEDs Interconnect Pte Ltd**  
5012 Ang Mo Kio Avenue 5, #03-09  
Techplace II (East Wing), Singapore 569876  
**Email:** [sales.marketing@meds-int.com](mailto:sales.marketing@meds-int.com)  
**Tel:** +65 6235 6355



401 North 5600 West  
Salt Lake City, UT 84116  
800-441-9910  
[www.cirris.com](http://www.cirris.com)