

**AUTHORISED REPRESENTATIVE:**

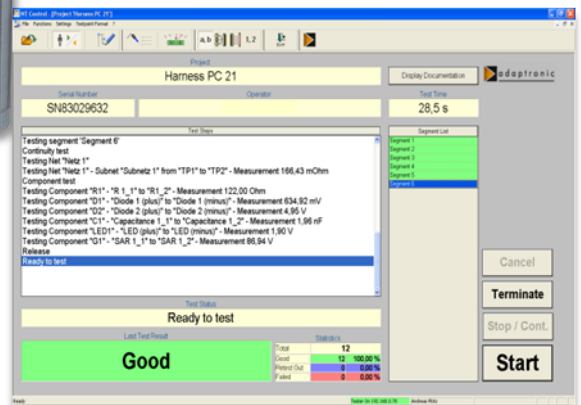
**MEDs Interconnect Pte Ltd**

5012 Ang Mo Kio Avenue 5, #03-09 Techplace II (East Wing), Singapore 569876

**Email:** sales.marketing@meds-int.com | **Tel:** +65 6235 6355



Image: NT 210 with options



## NT 210

### Entry into the NT series with a wide range of features

- Easy operation via PC with control software NT Control
- Comfortable test program editors
- Extensive display possibilities and tools for fault location in the unit under test
- Extensive result reporting to file, to printer or via database connection\*
- Up to **512** test points, expandable with test point units
- Low voltage test up to **12 VDC / 10 mA**
- Continuity test, short circuit test and component test
- Remote maintenance

The NT 210 is characterized by an outstanding price performance ratio and is especially optimized for the operation in connection with test consoles:

- Support of adapter LEDs
- Push-back test
- Assembly help during the manufacture of wiring harnesses
- Space saving design
- Interfaces for cutter, marker etc.

\* optional

# TESTING

# NT 210

## Test program generation and testing with NT Control

With the user friendly software NT Control it is comfortable to generate, edit and to manage test programs as well, as to carry out tests. The data transfer between a PC with NT Control and a NT 210 takes place via network. NT Control is necessary for the operation of the NT 210 and part of the delivery. NT Control can be run on a PC\* with the operating system Microsoft Windows® 7 Pro up to Windows® 10 Pro (country variants German or English).

<b>Technical features NT 210</b>	
Test points	64, 128, 192, 256
<b>Low voltage test DC</b>	
Test voltage	max. 12 V
Test current	max. 10 mA
Threshold continuity test	1 Ohm – 1 kOhm
Threshold short-circuit test	20 kOhm – 1 MOhm
Component test	Resistors: 1 Ohm – 1 MOhm Capacitors: 10 nF – 10 mF Diodes, Zener diodes, LEDs
<b>General</b>	
Power supply	External AC adapter, primary 90 – 240 VAC, secondary 24 VDC / can also be operated directly at 24 VDC
Interfaces	3 x digital I/Os (Extern Interface, expandable) for control, foot switch and signal lamp Serial interfaces RS232 / USB 2.0 Network Pin number probe
Dimensions (W x H x D, approx.)	235 mm x 140 mm x 275 mm
Scope of delivery	NT 210, AC adapter with main cable, pin number probe, USB flash drive with NT Control and documentation in PDF format

\* PC not in the scope of delivery